

USER MANUAL

VERTICAL RIM LOCK

Fingerprint
Password
RFID Card
REMOTE CONTROL (Optional)

The default password is 1234.
Please change to new password.
Ensure not to use consecutive or
repetitive numbers for your safety.

PTSP5300ONTA REV.01

Safety Cautions

- The manual should be read thoroughly before operating the product.
- For security the password should be changed on a regular basis.
- When the batteries are inserted in reverse positions it may result in liquid leakage or rupture.
- When the batteries are flat all the batteries should be replaced.
- Please replace with new batteries do not use used ones to replace.
- Do not install disassemble or repair without the assistance of a product repair technician.
- Use soft and dry cloth to clean the product.
- Do not press or insert the buttons with awls or pins.
- Do not use the product for any purpose other than a digital door lock.
- Do not to let water get into the product.
- This product is a household use, and cannot guarantee normal functioning in any other environment settings.
- Do not subject the product to any severe impact.

Product Specification

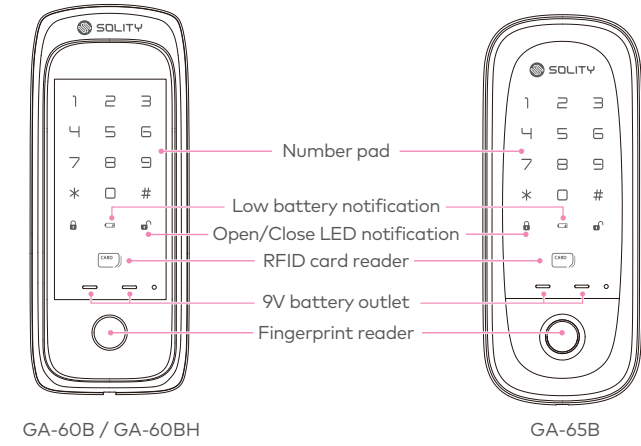
Installation condition	Door thickness	25~60mm
Opening method	Password RFID Card Fingerprint	4~12 digits up to 4 passwords may be registered. Up to 100 RFID cards may be registered. Up to 100 fingerprints may be registered.
Rated voltage	DC 6V	LR6 1.5V AA alkaline battery
Emergency power supply	DC 9V	9V Battery (6LF22) (sold separately)
Sensing high temperature	Temperature sensor	72°C±5°C (Laboratory environment) 62°C±5°C (General environment)
Material	Outdoor body Indoor body	Zn, ABS, PC Zn, ABS

The contents of this user guide are subject to change without prior notice in order to enhance performance of the product.

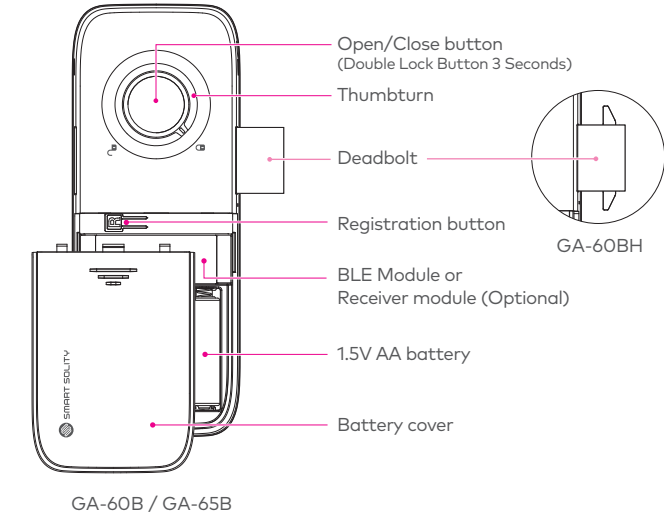
Caution

This product is a door lock without mechanical key override. Thus, if it does not work, you can damage a part of the door lock. You need to fully understand how to use the manual locking switch to prepare for an emergency.

Names of Individual Parts (Outdoor Body)



Names of Individual Parts (Indoor Body)



Product Components

* The product components may change depending on the installation environment.

User manual	RFID Card	Screws
Striker	Drilling guide (*Installation manual)	
'AA' Batteries (LR6)		

Sold separately

Smart Bridge	Remote control/Receiver module	Video door phone module
--------------	--------------------------------	-------------------------

How to Register / Change the Password

Ensure the door is open when registering/changing the password.

1. Open the battery cover and press [Registration] button.



2. Enter new password between 4~12 digits.

new password

3. Press [*] to complete the password registration/change.



- Up to 4 passwords can be registered.
- Before the lamp on the number pad goes out, enter the new password and repeat the steps 2 and 3 as above.
- If the password is not entered within 10s after the [Registration] button is pressed, the registration process will be canceled.
- When new passwords are registered, existing passwords will be automatically deleted.

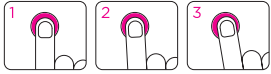
How to Register Fingerprints

Ensure the door is open when registering the fingerprint.

1. Open the battery cover and press [Registration] button.



2. Place your finger on the fingerprint reader and scan again according to the number pad instructions (Total 3 times).



Before the number pad light turns off, repeat the 2nd step to continue registering fingerprints.

3. Press [*] button and when a beep sounds the registration is complete.



- Up to 100 fingerprints can be registered.
- During registration process, existing fingerprints will not be deleted.
- When replacing the fingerprints, please delete all fingerprints first
- Registration will be cancelled if there is no input for 10 secs.
- Injured fingerprints and children's fingerprint might be difficult to register.
- Please keep the fingerprint reader clean at all times.

How to Register RFID Cards

Ensure the door is open when registering RFID cards.

1. Open the battery cover and press [Registration] button.



2. Tag the RFID card onto the reader. (Check for a beep sound every time a new RFID card is registered).



3. Press [*] button and when a beep sounds the registration is complete.



- Repeat step 2 before the number pad turns off to add additional RFID cards. (Up to 100 RFID cards can be registered)
- If the RFID card is not tagged within 10s after [Registration] button is pressed, the registration process will be canceled.
- When new RFID cards are registered, existing passwords will be automatically deleted.
- Only use the RFID cards provided by Solity.
- Solity will not be held for any responsibility, if there are any problem that might occur by using other RFID cards.

How to Delete RFID Card / Fingerprint

1. Open the battery cover and press [Registration] button.



2. Press [8] : Delete RFID cards
Press [9] : Delete fingerprint

8 RFID Card

9 Fingerprint

3. When the Number pad on the body outside of the door is lit, press [#] button for 5 seconds.

5 seconds

Opening the Door From Outside (With Fingerprint)

Scan the registered fingerprint against the reader.



- Press [#] button before inputting the Fingerprint to enter silently.

Opening the Door From Outside (With Password)

1. Touch the number pad.



2. Enter 4~12 digits for the password.

password

3. Press [*] button and it will unlock with a beep sound.



- You can enter random number before or after pressing the password.
- Press [#] button before inputting the password to enter silently.

- If you are worried about exposing your password, please use random number function. (Up to 20 digits can be pressed)
- When wrong password is entered for 5 consecutive times, the lock will not work and sound an alarm for 1 minute.

Opening the Door From Outside (With RFID Card)

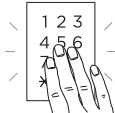
Automatic Detection Mode

Tag the registered RFID card against the reader.



Manual Detection Mode

Touch the number pad and tag the registered RFID card once it lights up.



- Press [#] button before scanning the RFID card to enter silently.
- Default setting is Automatic Detection Mode.

Opening the Door from Inside

Press [Open/close] button on the inside of the door and the door will open.



Turn the manual thumbturn towards [] to unlock.



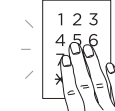
Locking the Door from Outside

Automatic Lock Mode

When the door is closed, it will be automatically locked within 2 seconds.

Manual Lock Mode

Touch the number pad and press [#] button. Then the door will be locked.



- Default setting is Automatic Lock Mode.

Locking the Door from Inside

Automatic Lock Mode

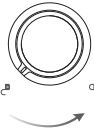
When the door is closed, it will automatically lock within 2 seconds.

Manual Lock Mode

Press [Open/Close] button on the indoor body in order to lock the door.



Turn the manual thumbturn towards [Lock] to lock.



Forced Lock Function (Outside Double Lock)

This function prevents opening from inside with [open/close] button.

1. With the door locked touch the number pad.

2. Enter password between 4~12 digits and press [#] button.



3. Press [0] button.



How to deactivate the function

Open door with the manual thumbturn, fingerprint, password, RFID card can deactivate the double lock function.

Forced Lock Function (Inside Double Lock)

This function prevents opening from the outside with any kind of authentication methods.

How to activate

While the door is locked, press [Open/Close] button for 3 seconds until you hear a beep.



3 seconds

How to deactivate the function

Turn the manual thumbturn or press [Open/Close] button can deactivate the double lock function.

Module/Remote Control Setting (Optional)

How to Register

1. Open the battery cover and press [Registration] button.



2. Press [Registration] button on the video door phone module.



Press [Open] button on the remote control.
(up to 5 portable remote controls can be registered)



3. Press [*] button on the number pad to complete.



How to Delete

1. Open the battery cover and press [Registration] button.



2. Press [0] on the number pad.



3. Press [#] button for more than 5 seconds and all the registered information on the remote control will be deleted with a beep sound.



- To add video door phone module and/or remote controller for registration, repeat #2 before the number pad light goes out (up to 5 can be entered).
- To use video door phone module, purchase a separate module to install.
- When new video door phone module or remote control is registered, existing devices will be automatically deleted.
- When there is no input for 10 seconds during the process, the registration will be canceled.
- In order to use the video door phone module, you also need the receiver module.

Volume Control

Volume can be adjusted when the door is locked.

To Increase



To Decrease



- Volume can be adjusted to 7 levels including mute.

RFID Card Detection

This function will allow to scan the RFID Card Automatic or Manually.

Automatic Detection Mode



Manual Detection Mode



- Default setting is Automatic Detection Mode.
- In automatic detection mode, simply tag the RFID card against the reader to unlock.
- In manual detection mode, touch the number pad and the scan the RFID card against the reader.

Automatic/Manual Lock Mode

This function will allow to automatically/manually lock the door.

Automatic Lock Mode



Manual Lock Mode



- Default setting is Automatic Lock Mode.
- In automatic lock mode, the door will automatically lock within 2 seconds after it is closed.
- In manual lock mode, the door will not lock even if it is closed. You need to either press the [Open/Close] button or touch the number pad and press the [#] button to lock.

Deadbolt Alarm

While the deadbolt unlocks/locks the door, if it doesn't fully extend or withdraw, an alarm will sound (3 beeps).

- If the alarm doesn't stop or the product does not function properly, re-adjust the position of the lock so there is no interference of the deadbolt.
- Please contact your nearest Customer Service if it repeats often.

Low Battery Alarm

While the lock operates normally but sounds an alarm with the low battery LED notification, the batteries needs to be replaced. Ensure to replace all 4 batteries at once.



- When the batteries are flat all of them need to be replaced.
- Do not mix batteries with different manufacturers or brand.

How to use Emergency Battery

When the batteries are completely flat and the lock doesn't function, prepare a 9V battery for emergency entry.

1. Contact 9V battery against the 9V battery outlet.



2. Touch the number pad and then enter the password.
(Touch the number pad only when the number pad is not lit.)

3. Press [*] button and with a beep sound the product will be unlocked.

Break-in Alarm

While the door is locked and if the product senses any sign of abnormal attempts to open it with force, the alarm will go off with the sound reaching 80dB.

How to deactivate the break-in alar

Remove the batteries, enter password, tag RFID card or scan your fingerprint.

How to Connect BLE module

1. Remove the battery cover.

2. Connect the BLE module into the socket.

3. Install the APP [Smart Solity] on your phone and follow the instructions from it accordingly.



- Go to Google Play store or APP Store to download [Smart Solity].

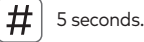
- BLE module has to be separately purchased.
- Please refer to the registration guide provided from the APP.

How to Reset BLE module

1. Remove the battery cover and press [Registration] button.

2. Press [7] button.

3. Press [#] for 5 seconds and the BLE module will be initialized with a beep.



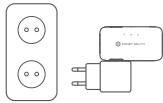
- Use this function when you have lost or changed your phone, and unable to delete through the APP.

How to Connect with the Smart Bridge (Optional)

When Smart Bridge is connected, Smart Solity App can be utilized remotely such as from your office or even abroad.

1. Assemble Smart Bridge with the adapter and plug it into the power outlet.

2. Run [Smart Solity] and select Function settings.



3. Press Connect Smart Bridge and follow the instructions accordingly.

- Plug in Smart Bridge close to the door lock.
- BLE module and Smart Bridge are sold separately.
- Please refer to the Smart Solity APP on how to reset.

High Temperature Alarm

When the lock senses a high temperature (62°C ± 5 °C) with a risk of fire, an alarm will sound in high volume to acknowledge the danger and the door will be automatically unlocked for safe exit

- If the indoor body is exposed to direct sunlight, it may cause the high temperature alarm to go off.
- Even under Forced Lock Mode, the door will automatically unlock.

Prank Alarm and 1-minute Lock Down

When unregistered password, RFID card or fingerprints are entered wrong for 5 consecutive times, the lock will not function for 1 minute with an alarm.

- Try again after the 1 minute lock down has been disabled.

Trouble Shooting

Trouble	Solution
Product does not turn on.	Please check the direction the batteries are inserted and check polarity marking. Please replace all of the batteries (Alkaline). Please check the battery status and/or the whether the battery is flat.
Password is not changed.	Touch the [Registration] button with a short beep sound. Refer to How to Register and/or Change password in the user manual.
Door does not open even after entering the password with the [*] button touched.	Check whether the password is entered correctly. If the key pad lights are out while entering the password, the buttons cannot be touched touch the number pad. once again to light and then enter the password once again.
Registered information can be verified with the password/RFID cards but the door does not open.	Use 9V emergency battery (Square battery) for one more attempt. Locking device may be one of the major causes contact the service center for assistance.
When being used, the product keeps making beeping sounds.	The alarming sound signals battery replacement. When there is the beeping sound, replace all the batteries (Alkaline) with new ones.
Door does not lock automatically.	Please reset to auto mode. When the batteries are flat, the product will only make sounds but does not function. Please replace all 4 batteries (Alkaline).