

FINGERRPINT CABINET LOCK

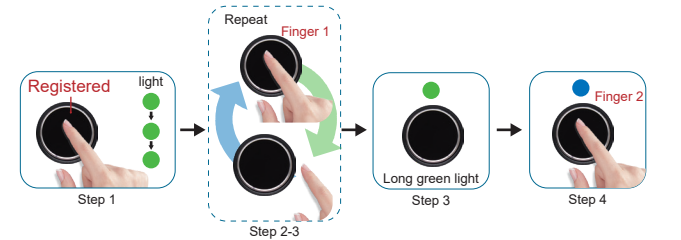


USER MANUAL

Automatic Mode

1. How to add new fingerprints

- Put a finger on sensor, green light and latch retracts, holding, green light and latch comes out, keep holding, green light on, then remove
- Blue light, put a finger on, green light then remove
- Put the finger on, green light then remove; repeat until a long green light for 2 seconds
- (The fingerprint is registered)
- Blue light, add more new fingerprints

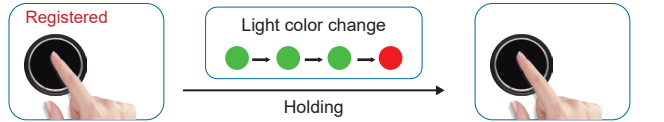


Note

- 1). Make sure add the fingerprint before using. Any finger can unlock in the factory setting
- 2) In order to keep the lock work well, to add no less than 3 fingerprints

2. How to delete fingerprints

- Put any registered on sensor, green light, holding, green light again, keep holding, green light then red light flashed, then remove
- green light for 2 seconds, all the fingerprints deleted



3. How to lock

- Push the door closed, door lock automatically

4. How to unlock

- Put any registered fingerprint on sensor
- Green light, unlocked
- Pull the door open

Other Function

E-Key

- 1.Insert E-Key
- 2.Put any finger on sensor, green light flashes twice, unlocked
- 3.Pull the door open



2. Low battery warning

In case of low battery, to put on the registered fingerprint, green light flashes once, and red light flashes thrice, then a long green light, unlocked. To change the battery immediately after door open
Note: Use 3XAAA alkaline battery, not take carbone battery

3. Outer Power Supply

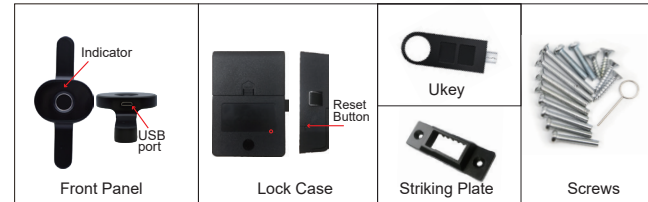
When low battery, can connect power bank or mobile plug for outer power supply
After unlocked, change the battery immediately



Feature

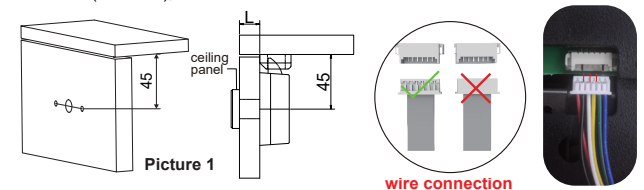
1. Biometric sensor, high sensitive and rapid responsive
2. Max 20 fingerprints to hold for multiple users
3. E-Key for emergency key and management
4. Zinc-alloy handle panel with elegant design
6. surface mounted, widely used in drawer, cabinet, wardrobe etc.

COMPONENT



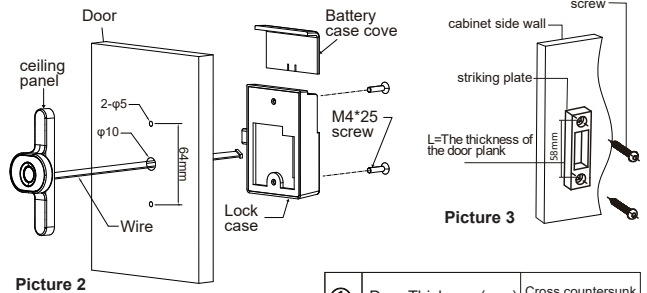
Installation Instructions

1. Put the installation drawing on the door, approx. 45mm between the door frame and center hole (Picture 1), then drill the hole



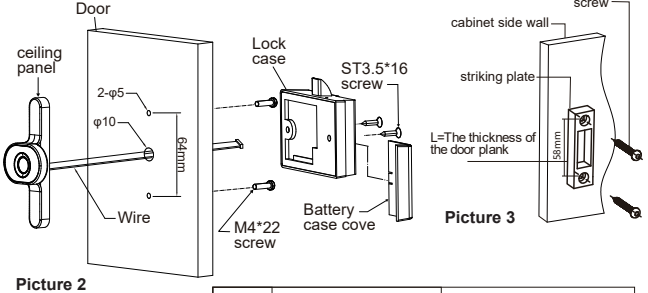
2. Install the front panel and back lock
 - 2.1) All-in-One installation
Wire goes through the center hole and connect back lock, (Tide up the wire not crush), fix the panel and back lock by crew M4X25
 - 2.2) Separation installation
Wire goes through the center hole and fix the front panel by screw M4X22, then connect the back lock, (Tide up the wire not crush), fix back lock by crew ST3.5X16
3. Fix the striking plate by screw ST3.5X20 (Make sure latch works well)

All-in-one installation—Chart①



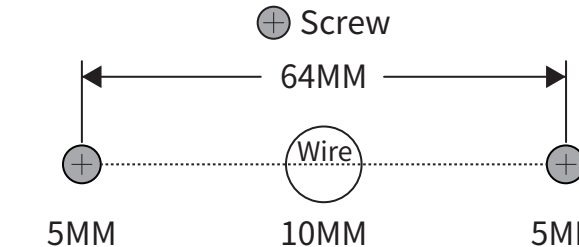
①	Door Thickness(mm)	Cross countersunk Screw
1	14mm~18mm	M4X25
2	19mm~23mm	M4X30

Separate installation—Chart②



②	Door Thickness(mm)	Phillips pan head Screw
1	14mm~16mm	M4X20
2	16mm~18mm	M4X22
3	19mm~21mm	M4X25

INSTALLATION DRAWING



Follow the drawing to drill the hole